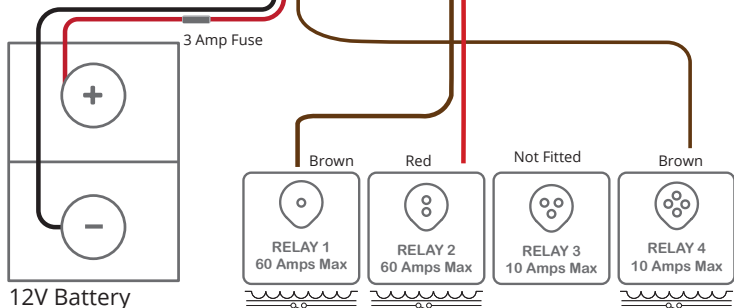
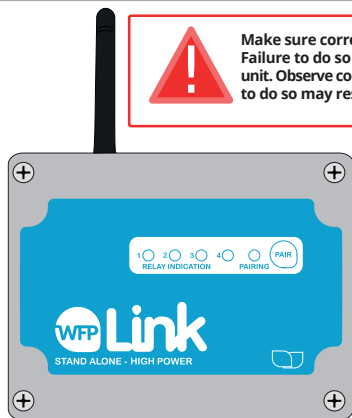


1 - Wiring

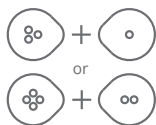
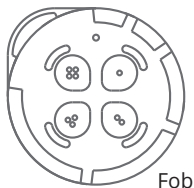


Make sure correct fuses are fitted inline. Failure to do so will result in damage to the unit. Observe correct battery polarity. Failure to do so may result in damage to the unit.



Connect the Stand Alone in accordance with this diagram.
NOTE: only fit the fuse once all connections are made.

2 - Pairing



To pair the fob and the WFP Link Stand Alone unit, press and hold two opposite buttons on the fob. If the fob is charged and working, the LED segments will light up and circle.



The PAIRING LED on the receiver will flash quickly. Press the PAIR button once.

If pairing is successful, the LED segments will stop circling on the fob and the PAIRING LED will flash slowly.

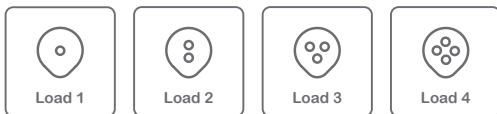


In the case of a missing or unresponsive fob (eg dead battery), press and hold the PAIR button to turn the pump on. Press and hold again to turn the pump off.

3 - Troubleshooting

Before pairing, fob LEDs do not circle	Check fob battery charge
Before pairing, receiver LEDs do not light	Check wiring
Pairing failed	Check fob battery charge - retry pairing
After pairing, fob LEDs do not light	Check fob battery charge - retry pairing

4 - Operation

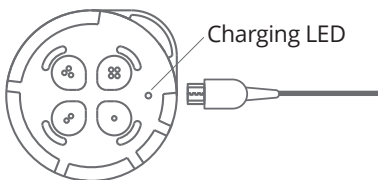


To start a load, press the button on the fob once. To indicate that the function has worked, the fob LED strip will fully illuminate. Whilst the load is running, the corresponding LED will be illuminated on the receiver.



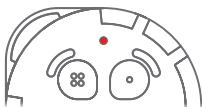
To stop a load, press the button on the fob once. To indicate the function has worked, the fob LED strip will partially illuminate. Whilst the load is off, the corresponding LED will not be illuminated on the receiver.

5 - Charging



Rechargeable Fob

The fob will indicate when it needs charging by flashing red when a button is pressed if bat' low. To charge, plug in a micro USB charger to the charging connector. The charging LED flashes green when charging and solid green when charged.



Operating Warnings



Fit your WFP Link Stand Alone receiver unit carefully in accordance with the diagram and following these instructions*.

The WFP Link Stand Alone is supplied with four differently coloured pairs of wires, plus a red and a black wire, already fitted. One of each of the pairs of wires must be connected to the positive battery terminal and the other one to the positive side of the load. It does not matter which way round they are connected. The negative side of each of the loads should then be connected to the negative battery terminal. Each load should be individually fused between the WFP Link Stand Alone and the positive battery terminal. Pay particular attention to the colours and thickness of wires when fitting.

Receiver - Specification	Value
Supply Voltage	11 - 15 VDC
Maximum Current	75mA
Max Load Current	Load 1- 60A Loads 2,3,4- 10A
Enclosure Material	ABS
Water Resistance - Receiver	IP65
Dimensions	115 x 90 x 55 (mm)
Working Temperature	0 to 40 Deg C
WFP Link Stand Alone - Range	300m (approx**)

Fob - Specification	Value
Supply Voltage Micro USB Port	5 VDC (300mA)
Water Resistance - Fob	IP54 (water resistant)
Dimensions	75 x 16 (mm)

*** Unit must be installed by a competent electrician or electrical engineer. Failure to comply with these instructions could invalidate your warranty.**

**** All range distances are line of sight and approximate. Working distances may vary depending on obstacles, environmental conditions and individual installation.**

DISCLAIMER

THE MANUFACTURER RESERVES THE RIGHT TO MAKE CHANGES TO ANY PRODUCT HEREIN TO IMPROVE RELIABILITY, FUNCTION OR DESIGN. THE MANUFACTURER DOES NOT ASSUME ANY LIABILITY ARISING OUT OF THE APPLICATION OR USE OF ANY PRODUCT OR CIRCUIT DESCRIBED HEREIN.

For more information and videos on how to use Spring controllers please visit: www.springltd.co/videos

Copyright © 2021 Spring (Europe) Ltd. All rights reserved.

VERSION 1.0 RELEASE 08.10.24